



Bluebeam Inc.

Press Kit - 2023

www.bluebeam.com

Who we are

Since 2002, Bluebeam, Inc. has been at the forefront of the digital revolution in construction technology. In 2014, we joined Nemetschek, a global pioneer in the digital construction space with software solutions covering the entire project lifecycle.

At Bluebeam, our mission is to continually disrupt the status quo and unleash human ingenuity on every project in the built world. That's why we're committed to improving the lives of design and build teams everywhere with reliable, easy-to-use software solutions that save time and money, project after project.

Today, more than 3 million people in over 160 countries use Bluebeam solutions to mark up, collaborate and get more done.



The Nemetschek Group

We're a proud member of the Nemetschek Group, a global pioneer in the digital construction space with software solutions covering the entire project lifecycle.

Together with our sister brands, we're driving digital transformation across the global AECO industry with a shared commitment to open standards and continual innovation.

Nemetschek's unique structure gives Bluebeam the entrepreneurial freedom to develop innovative, customer-focused solutions, with the added benefit of cross-collaboration and knowledge-sharing for best-in-class tools.

PLANNING + DESIGN

Precise, innovative, open planning
and design workflows

ALLPLAN

GRAPHISOFT

IRISA

SOLIBRI

VECTORWORKS®

NEMETSCHKEK ENGINEERING

FRILO

SCIA

BUILD + CONSTRUCT

Collaborative, efficient and
sustainable construction processes

BLUEBEAM®

NEVARIS

OPERATE + MANAGE

Smart, intelligent and comprehensive
building management

CREMSOLUTIONS

SPACEWELL

MEDIA + ENTERTAINMENT

Creative, intuitive and
powerful 3d animation

MAXON

DIGITAL TWIN BUSINESS UNIT

dRofus

Office Locations

Our customers are global and so are we. Headquartered in Pasadena, California, we have employees and offices all around the globe.



Pasadena

443 S. Raymond Ave.
Pasadena, CA 91105
United States



Brisbane

260 Queen Street
Brisbane QLD 4000
Australia



Chicago

400 N. Michigan Ave.
Ste. 1500
Chicago, IL 60611
United States



Copenhagen

Ny Østergade 10, 5 tv.
1101 Copenhagen
Denmark



Dallas

One McKinney Plaza
3232 McKinney Ave.
Ste. 900
Dallas, TX 75204
United States



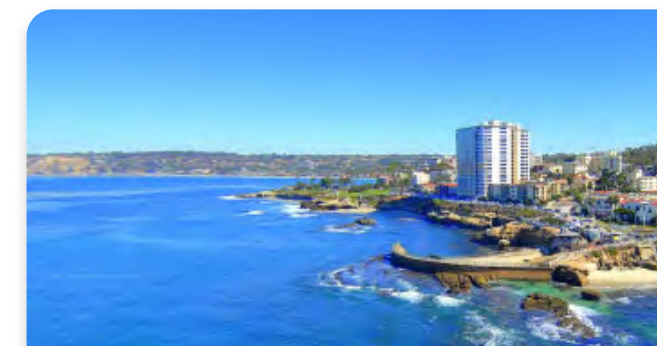
London

20 Eastbourne Terrace
Ste. 5.07
London W2 6LG
United Kingdom



Munich

Konrad-Zuse-Platz 1
81829 Munich
Germany



San Diego

225 Broadway
Ste. 1450
San Diego, CA 92101
United States



Stockholm

Kistagången 12, 164 40
Kista
Sweden



Bluebeam Timeline

A core brand of the Nemetschek Group, the name “Bluebeam” has been synonymous with digitalization in the construction industry for nearly two decades.

- **2002**
Bluebeam launches its first product, Pushbutton PDF.
- **2005**
Bluebeam releases Revu, the first annotation and editing solution for the design and construction industry.
- **2010**
Bluebeam integrates cloud-based collaboration and storage directly into Revu with Studio.
- **2014**
Bluebeam joins the Nemetschek Group, known for driving digitalization in the AECO industry.
- **2015**
Bluebeam introduces the Studio API, making a commitment to multi-platform integration.
- **2022**
Bluebeam takes digital collaboration to a whole new level with the launch of Bluebeam Cloud and the next evolution of Bluebeam Revu.

Key Stats

We serve a rapidly growing, global community of AECO professionals from companies of all shapes and sizes.

3 million

Bluebeam users worldwide

160+

Countries where Bluebeam
is used

350,000+

Companies using
Bluebeam

99%

Of top US contractors use
Bluebeam*

74%

Of top international design
firms use Bluebeam*

86%

Of top US design firms use
Bluebeam*

* Top 50 firms by revenue, as reported by Engineering News-Record

Bluebeam Academic Program

The Bluebeam Academic Program empowers students and educators to push the limits of what's possible and build a better tomorrow.

We partner with AEC-related education programs and industry-sponsored student competitions around the world to provide free access to Bluebeam, sponsor scholarships, and cultivate unique learning opportunities.

Licensing

Free academic access to Bluebeam for students, educators, and school computer labs

Resources & Community

- Bluebeam University (BBU)
- Training videos and on-demand webinars at [Bluebeam.com](https://bluebeam.com)
- Bluebeam User Groups (BUGS)



1,500+

Schools using Bluebeam

82+

Countries where students
are using Bluebeam

\$120k+

In scholarships given by
Bluebeam

Channel Partner Program

The Bluebeam Channel Partner Program connects the industry with best-in-class resellers and distributors who extend our reach and bring an elevated level of understanding, training capabilities and unparalleled service to our customers. We equip our partners with the support and tools they need to ensure that our end-users receive the value they expect from Bluebeam's solutions. Authorized Bluebeam resellers are required to maintain comprehensive training and certifications to ensure they have the latest Bluebeam product knowledge.

To see our network of Bluebeam channel partners, visit resellers.bluebeam.com



100+

Channel Partners

46

Countries

250+

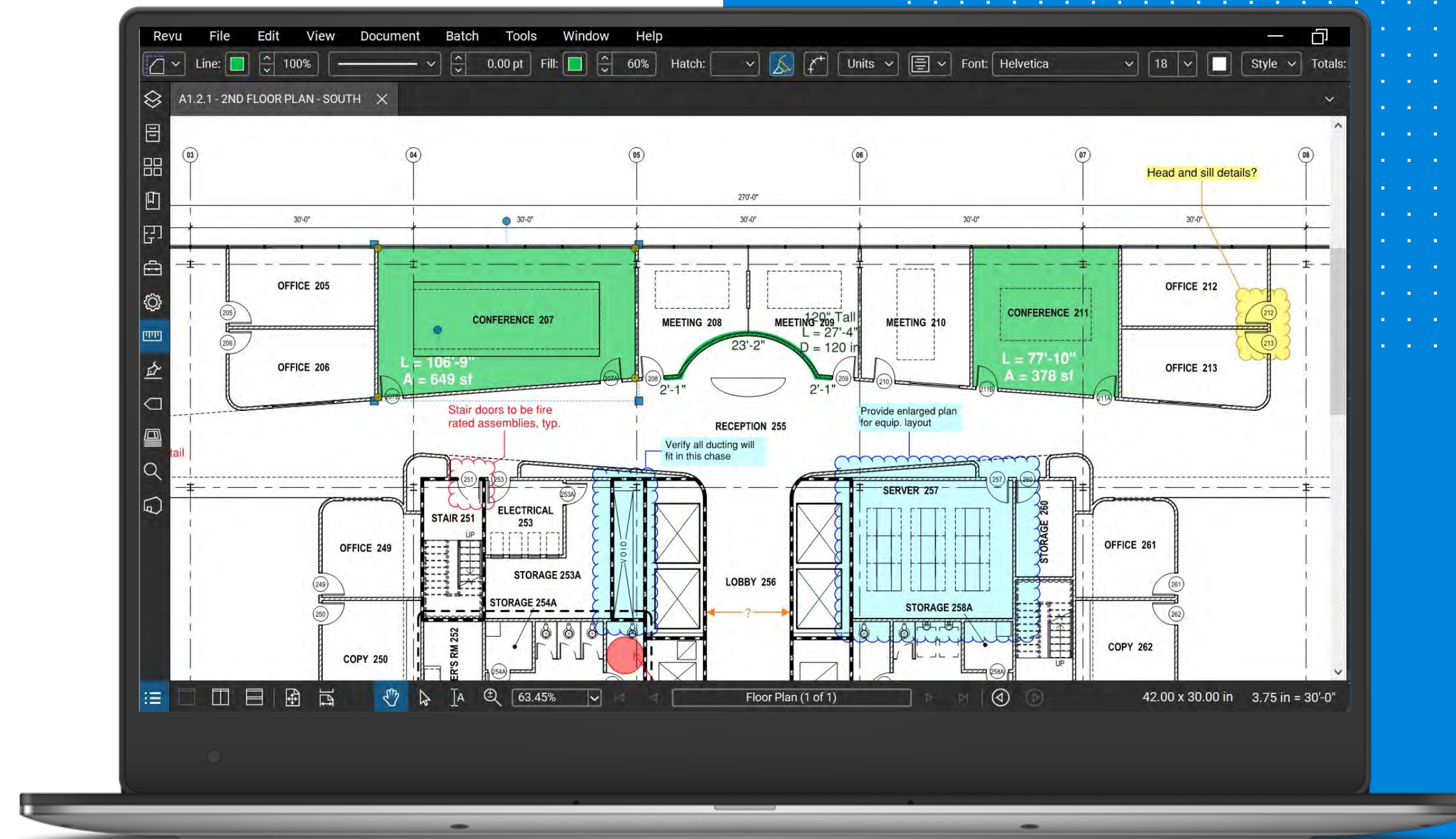
Certified Bluebeam Sales
Professionals within our
channel accounts

Product

Bluebeam Revu

Revu® offers powerful, highly customizable document management, markup and automation tools with a built-in collaboration space, Studio.

- ✓ Log in to any desktop with Revu installed and access your projects and tool sets
- ✓ Mark up and measure together with teammates in real time using Studio
- ✓ Share the latest drawings and documents with teams in the field using Bluebeam Cloud
- ✓ Automatically track all markups and edits and preserve important project data from start to finish
- ✓ Centralize entire projects in the cloud and access updates anywhere

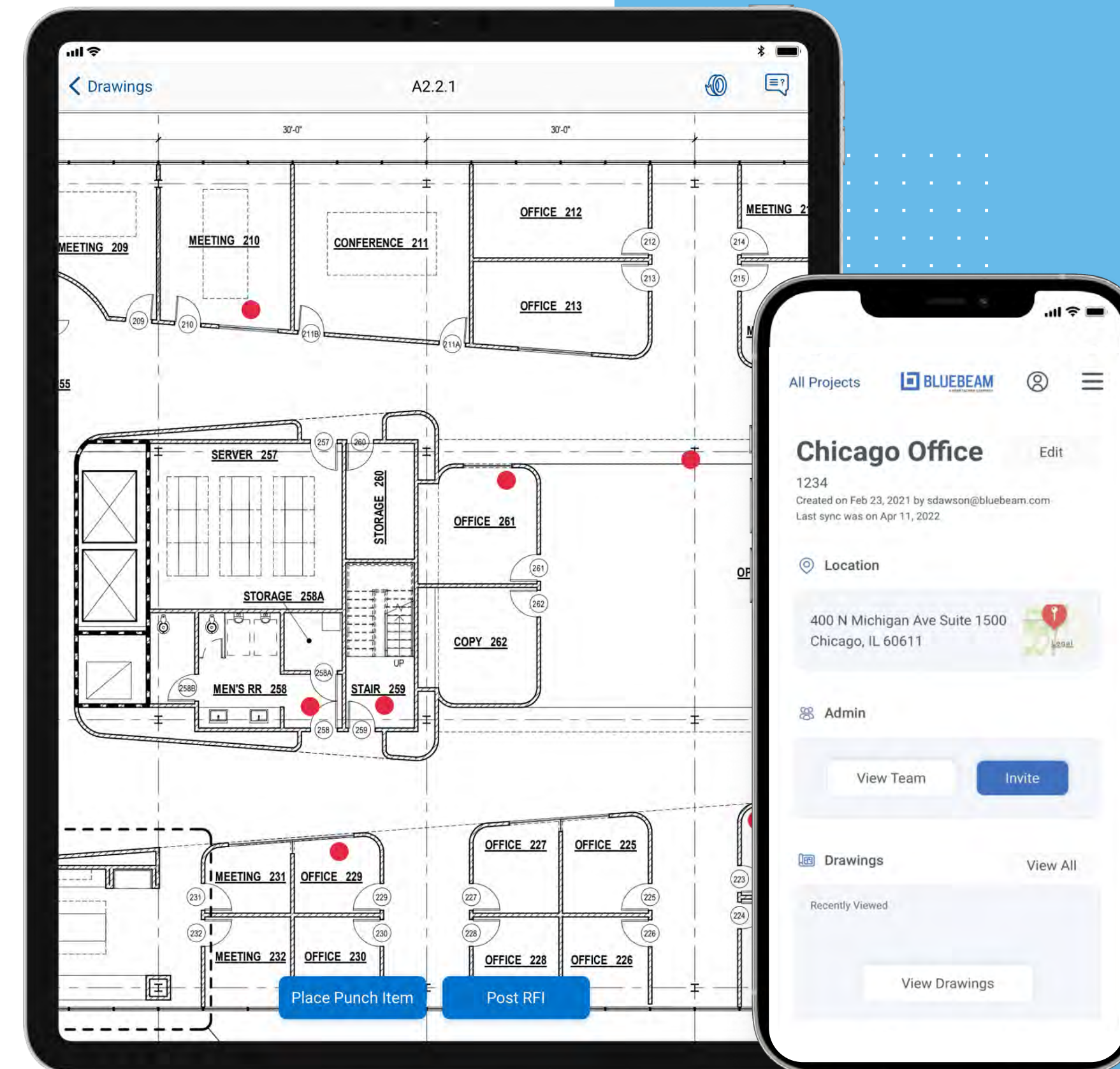


Product

Bluebeam Cloud

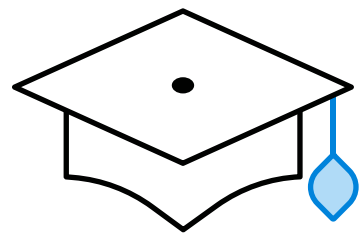
Connect office and field and complete workflows on the go with Bluebeam Cloud, our new suite of web and mobile solutions that seamlessly connects with your documents and tool sets in Revu

- ✓ Work from anywhere via web or iOS device – no setup or installation required
- ✓ Seamlessly access your tool sets and Studio Project files from Revu
- ✓ Easily invite team members to mark up and collaborate in real time with the Markup Editor
- ✓ Effortlessly manage punch, RFIs and submittals on the go with Field Tools
- ✓ Customize collaboration permissions to ensure the right people have access to the right information



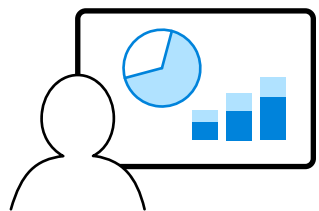
Professional Services & Training

Not only does Bluebeam offer software solutions for the AECO industry, we also provide professional services to help onboard and train users to get the best value from their investment.



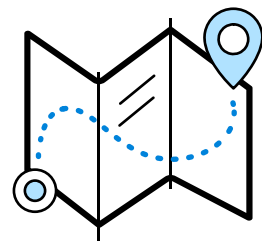
Bluebeam University

An on-demand learning platform included in all Bluebeam subscription plans that provides 20+ hours of interactive, self-paced e-learning courses.



Instructor-Led Training

Live courses led by an experienced Bluebeam trainer to answer questions and get new users up to speed either in-person or virtually.



Workflow Consulting

Bluebeam provides consultants to validate existing processes against Bluebeam best practices and ensure that customers are using the software solutions to their fullest potential.



Leadership

Meet the team of experienced industry leaders driving our global vision.



Usman Shuja
Chief Executive Officer



Roger Piskulick
Chief Financial Officer



Don Jacob
Chief Innovation Officer



Miekie Liebenberg
Chief Operating Officer



Robert Dawson
Chief People Officer



Jason Bonifay
Chief Technical Officer

Brand Guidelines

Logo Guidelines

This is a friendly legal reminder that these graphics are proprietary and protected under intellectual property laws.

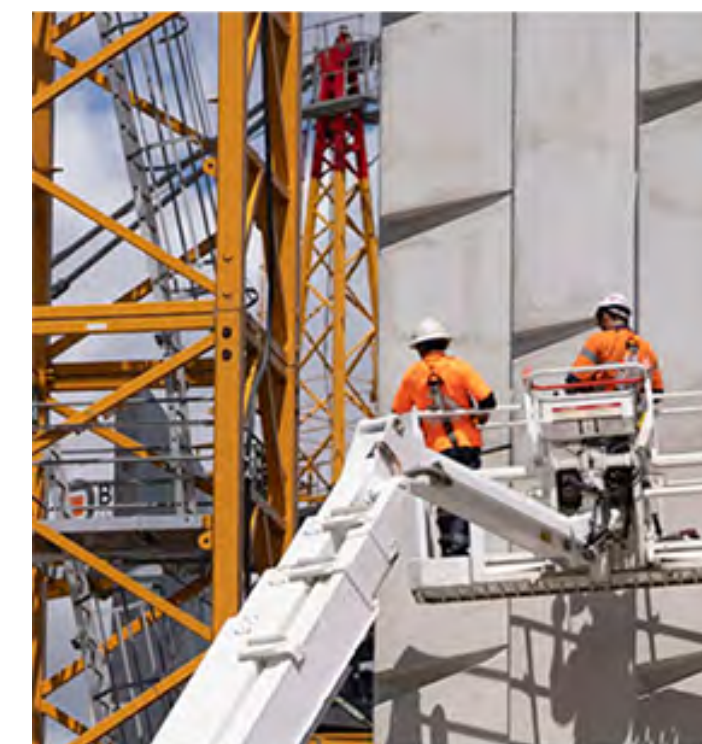
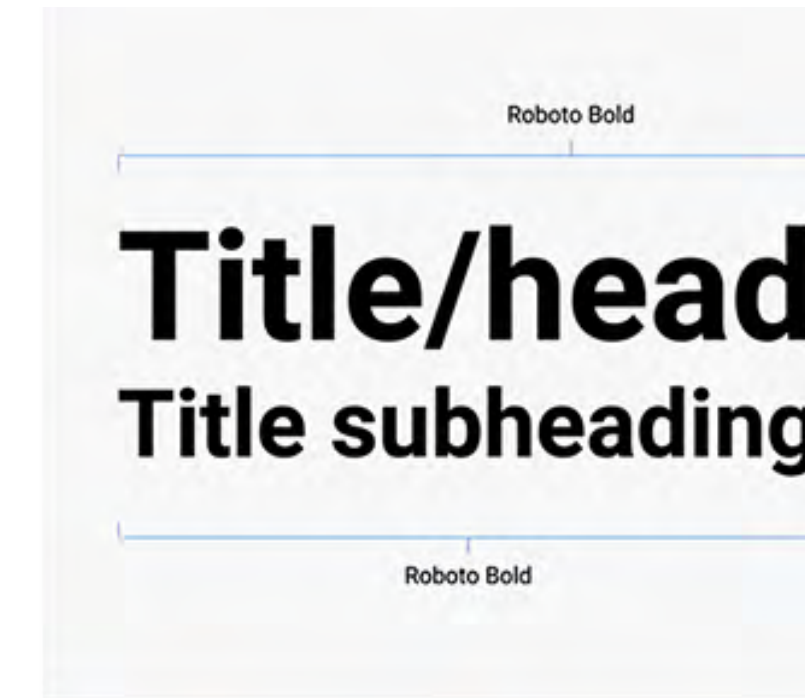
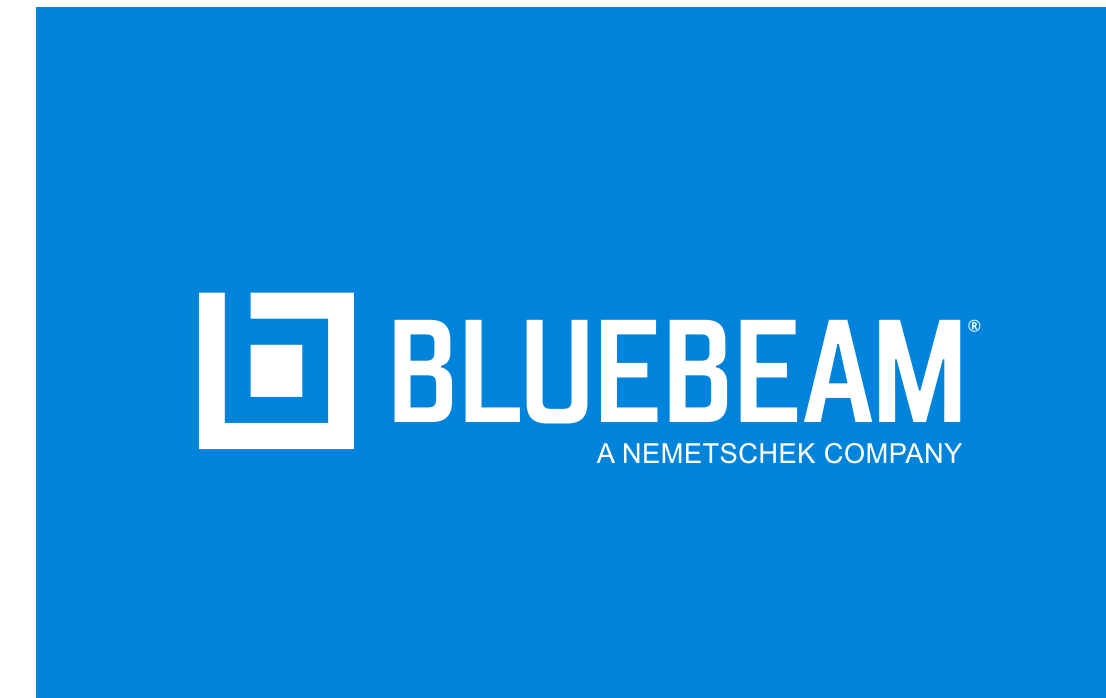
You may not:

- Alter these files in any way.
- Display these graphics in a way that implies a relationship, affiliation, or endorsement by Bluebeam of your product, service, or business.
- Use these graphics as part of your own product, business, or service's name.
- Combine these graphics with any other graphics without written consent from Bluebeam.

[Download the Logo Kit](#)

Brand Guidelines

For more comprehensive guidelines, check out our [Brand Guidelines](#)





Press Contact

Casey Novak, Director of Marketing Communications
cnovak@bluebeam.com
press.bluebeam.com